



Railay Princess Resort & Spa
Krabi, Thailand

Property: Railay Princess Resort & Spa

Address: Railay Princess Resort & Spa
145/1 Moo 2, Ao Nang, Muang, Krabi, 81180 Thailand

Tel: +66 (0)75 819 555

Website: www.krabi-railayprincess.com

Facebook: www.facebook.com/railayprincess

Instagram: [@railayprincess](https://www.instagram.com/railayprincess)

Sales and Marketing Office:

Tel: : +66 (0)75 819 555 Extension 3

Email: sales@krabi-railayprincess.com

For Reservation Inquiries: Email: reservation@krabi-railayprincess.com

Opened since: 2015



RESORT INFORMATION

The Resort has been designed in a unique modern style of feel and comfort, intended to make every guest feel at home. The Resort is surrounded by wonderful clear sea and marvelous cliff views.

Overlooking the magnificent Petch Mountain, our 4 star Resort offers a breathtaking view of the tropical paradise of Railay.

We offer all the required facilities including, mini-mart, swimming pool, childrens pool, conference and banquet area for our valued guests.

RECOGNITIONS

- Sustainable Tourism Goals (STGs)
- CF Hotel
- SHA Plus
- Go Green



ABOUT RAILAY BEACH

Railay Beach is an outstanding beach with beautiful features with limestone cliffs. The beach is divided into 3 parts: Railay Beach West which is surrounded by limestone cliffs, where it is possible to swim and also a point to watch the sunset.

Railay Beach East has a famous activity that is popular with foreign tourists, which is rock climbing. This is because at the end of the beach, there is a limestone cliff with a height suitable for rock climbing. Phra Nang Cave Beach, which is the location of Phra Nang Cave. Inside there is a shrine of Phra Nang that sailors in this area respect and worship. When entering the cave and looking out, tourists will see the mouth of the cave with stalactites descending to form an attractive chandelier, and it is also another beautiful sunset viewpoint. Getting there: Take a passenger boat (Long Tail Boat) at Ao Nang and Noppharat Thara Beaches. The fare is 100 Baht/ person/trip, and the journey takes about 20 minutes. Boats are available all day morning-evening.





ACCOMMODATION

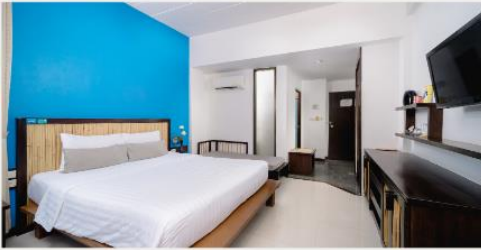
Railay Princess Resort and Spa is located directly on the Railay Floating Pier with a stunning view of the limestone cliffs in Railay Beach in the right on East side of beach. Railay Beach is the most popular beach as well as of the rock climbing in Krabi, with white sand beaches and the transparent Andaman Sea. Krabi International Airport is only 40 minutes away from Railay Princess Resort and Spa.

Railay Princess Resort and Spa provided 126 quality accommodations on hotel buildings, spreading around the tropical scenery gardens, mountain and virtually unspoiled nature. The Resort has been designed in a unique modern style of feel and comfort, intended to make every guest feel at home. The Resort is surrounded by wonderful clear sea and marvelous cliff views with oriental touch.

ACCOMMODATION

Superior Room

Superior rooms are spacious extremely clean including a large terrace where you can cool down after swim in the pool or taking in the splendor of the tropical cliffs scenery, After a day outdoor activities. Superior rooms provide the garden view, pool view and scenic tropical cliff.



Room category	Unit	Size	Occupancy Standard/(Max.)	Specific Room feature
Superior Room	33	30 sqm. *Price inc.(2A)	2/1	<ul style="list-style-type: none">Mountain and Garden view

Deluxe Room

Deluxe rooms include full facility and are ideal for families and honeymooners. Every unit types offer clean and specious accommodation with large terrace where you can enjoy the garden view. Poster bed, rain shower are provided as well as bath tub. You are able to go to our rooftop pool easily just 1 minute.



Room category	Unit	Size	Occupancy Standard/(Max.)	Specific Room feature
Deluxe Room	42	42 sqm. *Price inc.(2A)	2/1	<ul style="list-style-type: none">Garden view

Premier Room

Premier Room (Newly Renovation) offer a contemporary take on our Superior Room with new design featuring an open and there are 2 and 3 stories of the building with tropical décor into a breezy outdoor terrace with mountain view and pool view and lots of space for relaxation surrounded by tropical garden greenery.



Room category	Unit	Size	Occupancy Standard/(Max.)	Specific Room feature
Premier Room	26	42 sqm. *Price inc.(2A)	2/1	<ul style="list-style-type: none">Mountain and Garden viewPool view

ACCOMMODATION

Grand Deluxe Room

Grand Deluxe rooms include full facility and are ideal for families and honeymooners. Every unit types offer clean and specious large accommodation with large terrace where you can enjoy the garden view. Queen bed, rain shower are provided as well as bath tub. You are able to go to our rooftop pool easily.



Room category	Unit	Size	Occupancy Standard/(Max.)	Specific Room feature
Grand Deluxe Room	21	42 sqm. *Price inc.(2A)	2/1	• Garden view

Junior Suite Corner Room

Junior Suite Corner offer a contemporary style suites take on our popular Grand Deluxe design featuring an open and airy upper floor living plan with tropical scenery garden greenery on our spacious accommodation and comfortable suites feature.



Room category	Unit	Size	Occupancy Standard/(Max.)	Specific Room feature
Junior Suite Corner Room	4	44 sqm. *Price inc.(2A)	2/1	• Garden view

FACILITIES & SERVICES

Railay Princess Resort and Spa has 1 dining venue operation from 07.00 hrs. – 22.30 served for the breakfast, lunch, and dinner with cuisine that ranges of the Traditional Thai served and International in a variety of attractive settings. In addition, there are two main swimming pools one of with specious rooftop pool with a stunning the lime stone Mountain View and one overlooking with our lake there is a full service relaxation spa offering massage therapies, facials, wraps, scrubs and salon services. Kids club and Fitness center.

Railay Beach is the location for Krabi's limestone rock climbing you can earn belay methods and basic safety from an expert guide, then use a secure top rope to practice on cliffs above Railay and Phra Nang before taking on some of the world's most stunning rock.

PRINCESS RESTAURANT

Hour of operation: 07.00 hrs. – 22.30 hrs.

The restaurant open for all-day dining offers a premium Thai and Western cuisine selection with authentic local at Princess Restaurant. Princess Restaurant starts with a hearty breakfast and continues through to dinner in the late evening offers a romantic candlelight dinner with a view of the Limestone Mountains at the swimming rooftop pool, as well as superb Thai and international cuisines are served, and there is a broad selection of cocktails, spirits, local and international beers, world wines, and soft drinks and juices.





PRINCESS SPA

Relax & Enjoy with Traditional and Thai massage

Princess Spa's comprehensive selection of therapies relies on ancient Thai healing traditions and a concept of well-being to produce treatments that transmit a deeply felt sensation of relaxation and seclusion. There are renewing facials and cleanses, exciting body wraps, and restful massages to choose from.

WEDDING

Railay Princess Resort and Spa is a mid-range luxury hotel that offers a wedding beyond compare for couples to say "I do" as well as a fantasy created from the depths of their imagination and brought to life amidst limestone mountains, beaches, and a rooftop pool. We provide a variety of personalized experiences for your special day, whether it is a wedding, vow renewal, or a conventional ceremony. Let your imagination fly, all you want to do is a good helpful hand. Create your dream event with us and make it a memory to last a lifetime. Contact our specialist at email sales@krabi-railayprincess.com





PRIVATE CANDLE LIGHT DINNER

Time: 18.00 - 22.00

A romantic private dinner with your loved ones, when it comes to the most romantic settings for your memorable moments, Railay Princess Resort and Spa is second to none on Railay beach setting on our rooftop swimming on the 2nd floors, surrounded by your happiness by with a stunning view of the limestone cliffs in Railay Beach in the right on East side of beach. Celebrating among the most amazing view.

FITNESS CENTER

Open Daily: from 07:00 – 21:00 hours

Modern and fully equipped, our indoor gym is ready to fuel you with energy and you'll have the flexibility to customize your workout.





SWIMMING POOL

Pending Time with Garden pool & Rooftop pool.

The resort provided two swimming pools each with its own unique on your day for sunbathing one with a tropical scenery garden breeze overview of the garden pool facing the lake and one with a limestone mountain perspective of the rooftop swimming pool astonishing at the sunrise in the morning including the spectacular Andaman Seaview. Stay hydrated all day.





KIDS CLUB

Open daily: 07:00 am - 07:00 pm

The toys, games, and activities of the Princess Kid's Club will thrill children. The colorful playhouse has professionals to oversee children aged 4 and above while their parents enjoy some well-deserved relaxation. Every day brings new excitement with exciting kid's activities for all ages.

PRINCESS TRANSFER

Transfer from Krabi international Airport to resort and Transfer from Resort to Krabi Airport Private van + Joining long tail boat rate 1,500 baht per way (Max. 4 person) Service 24 hours, book in advance 2 days before arrival date.

Ao Nam Mao pier by join boat to Railay

- THB 200 net per round trip per pax

Schedule:

- In: 10.00 hrs., 14.30 hrs, 16.30 hrs.
- Out: 09.00 hrs., 11.00 hrs., 16.00 hrs.
- Private long tail boat charge 800 baht/way (Max. 4 person)

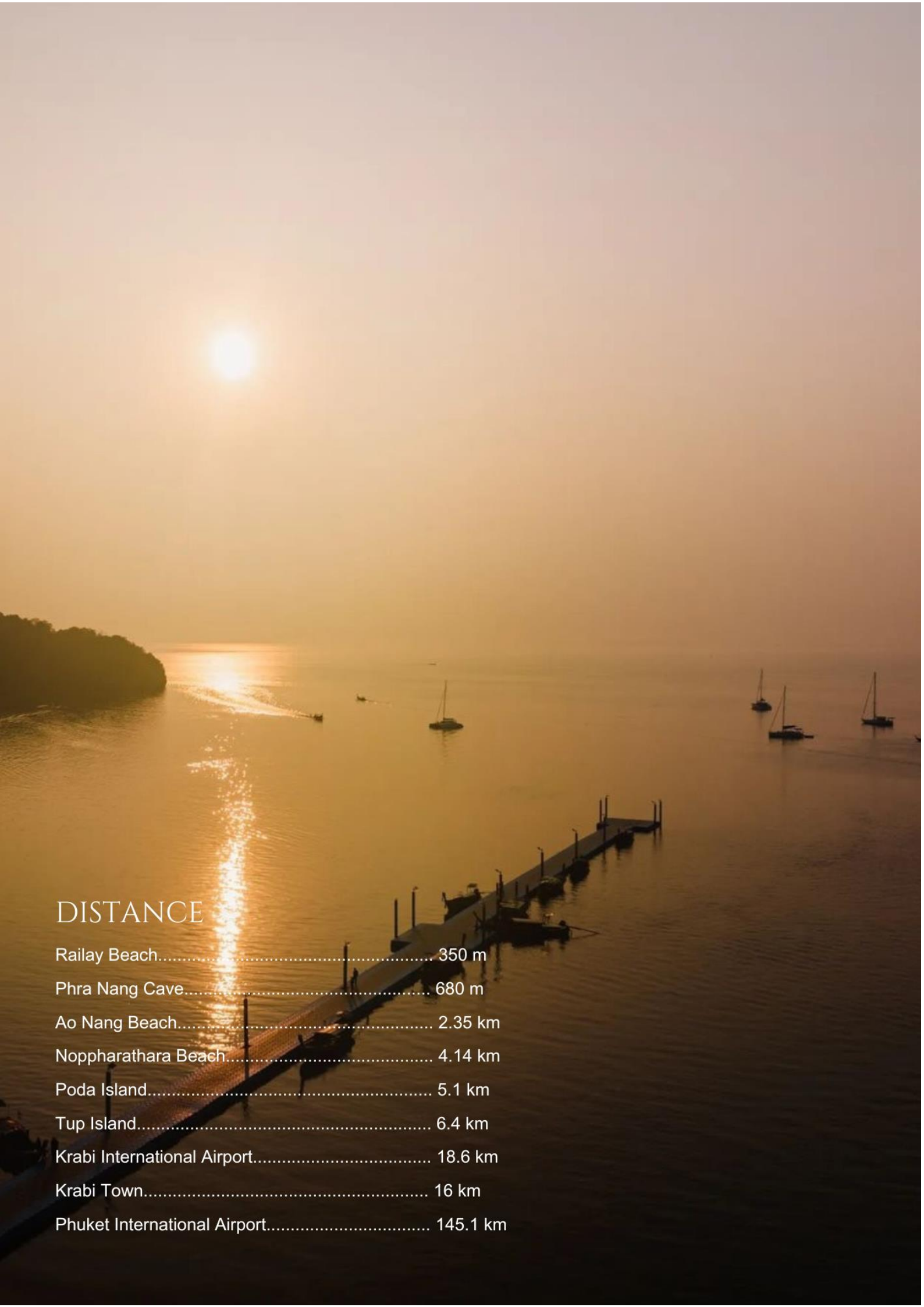




EXCURSIONS AND ACTIVITIES

Railay Princess Resort and Spa's excursions provide memorable, personalized experiences that put you in touch with the best the area has to offer. Whether you want to escape to a lonely beach at sunset or spend the day on one of speedboats or long tail boat touring Phi Phi Island, 4 islands, Hong Island, or Phang Nga Bay, our sea excursions promise a memorable trip and the opportunity to learn the art of Thai cooking.





DISTANCE

Railay Beach.....	350 m
Phra Nang Cave.....	680 m
Ao Nang Beach.....	2.35 km
Noppharathara Beach.....	4.14 km
Poda Island.....	5.1 km
Tup Island.....	6.4 km
Krabi International Airport.....	18.6 km
Krabi Town.....	16 km
Phuket International Airport.....	145.1 km



Railay Princess Resort & Spa
Krabi, Thailand